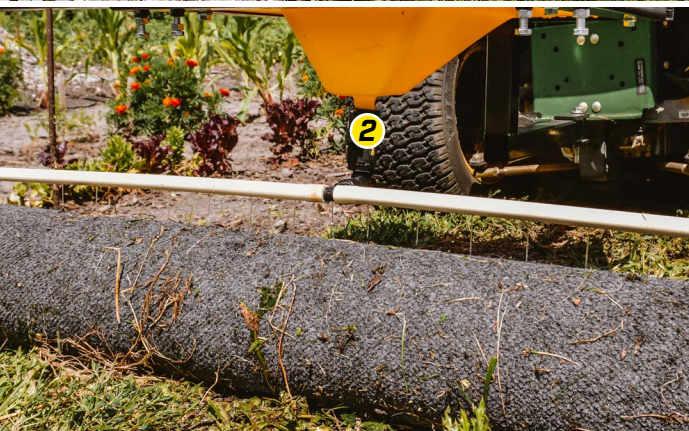


## THE **NO DRIFT** CHEMICAL APPLICATOR

- 01 TRU-KLEEN FULL DRAIN TANK
- 02 GRAVITY FED *[No Electronics]*
- 03 ADJUSTABLE HANDLE *[Push-Type]*
- 04 ADJUSTABLE HITCH *[Pull-Type]*
- 05 NO DRIFT ROLLER  
*[Applies Chemical Directly on Plants]*



# DANDY-LION KILLERS



## WR36" 3 GALLON PUSH TYPE

Part#	Description
WR36	36" Weed Roller - Push Type
REPLACEMENT PARTS	
CWR1033	WR36 Manifold Assembly
CWR1034	WR36 Roller with Carpet
CWR1045	WR36 Carpet



## WR48" 12 GALLON PULL TYPE

Part#	Description
WR48	48" Weed Roller - Pull Type
REPLACEMENT PARTS	
CWR1006	WR48 Manifold Assembly
CWR1025	WR48 Roller with Carpet
CWR1055	Plastic Knob Plunger Spring Lock Pin 1" x 5/8 - 11" x .44
CWR1066	WR48 Carpet
CWR1054	Replacement Tire



## WR72" 25 GALLON PULL TYPE

Part#	Description
WR72	72" Weed Roller - Pull Type
REPLACEMENT PARTS	
CWR1070	WR72 Manifold Assembly ( One Side Only )
CWR1034	WR72 Roller with Carpet
CWR1055	Plastic Knob Plunger Spring Lock Pin 1" X 5/8-11" X .44
CWR1045	WR72 Carpet
CWR1054	Replacement Tire

